



Seamless Visuals, Flexible Brilliance

LED Display with Controller



Fine Pixel Pitch



22-bit
Color Depth



Wide Color
Gamut



Easy Installation &
Maintenance



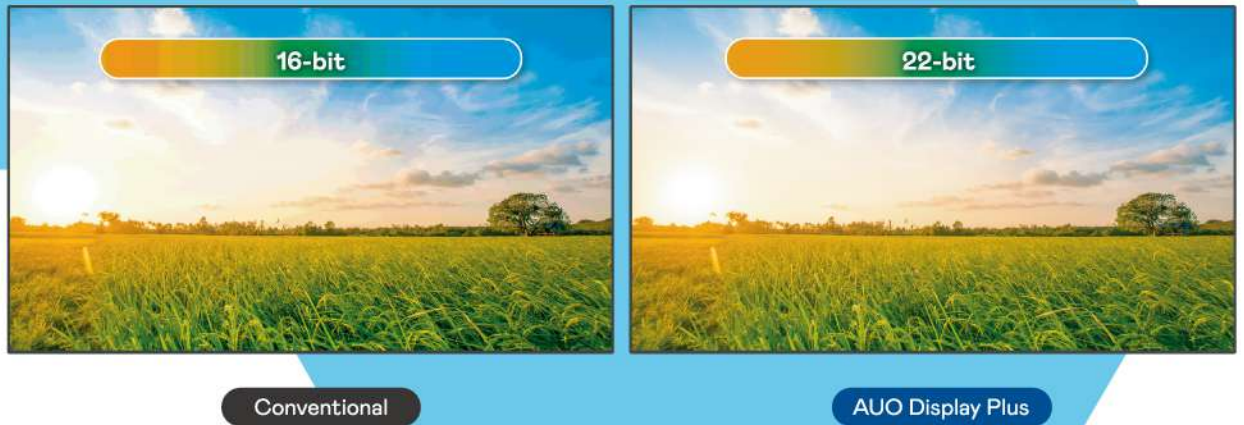
Bundled
LED Control

The AUO Display Plus LED Display with Controller utilizes our in-depth design expertise to deliver a flexible, modular product with exceptional visual performance. This state-of-the-art display comes with a LED controller, offering more flexibility than traditional LED video wall and all-in-one LED display alternatives. Boasting high color depth and volume for superior picture quality and fidelity, this series is perfect for creating immersive viewing experiences in meeting room, classroom, control room, conference hall, corporate lobby, showroom applications and more.

Exceptional Picture Quality

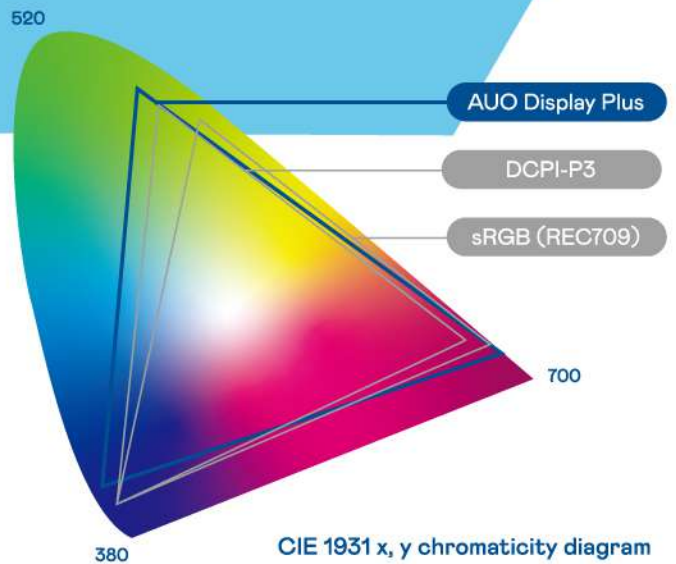
Extreme Depth and Detail

Treat your eyes to super vivid and brilliant visuals. With 22-bit color depth, you get to enjoy color expressed with greater precision, producing images with more fluid shadings, subtle gradations, and transparencies.



True-to-Life Colors

This series features wide color gamut, achieving 110% DCI-P3 and 150% REC. 709 coverage. This wider color palette renders high-fidelity and vibrant images, giving viewers an impressive visual impact.



Conventional



AUO Display Plus

Uniformity Fine-Tuned

This series undergoes brightness, color, and grayscale factory calibrations to ensure high uniformity, avoiding dirty screen effects and inaccurate display of images.



Conventional

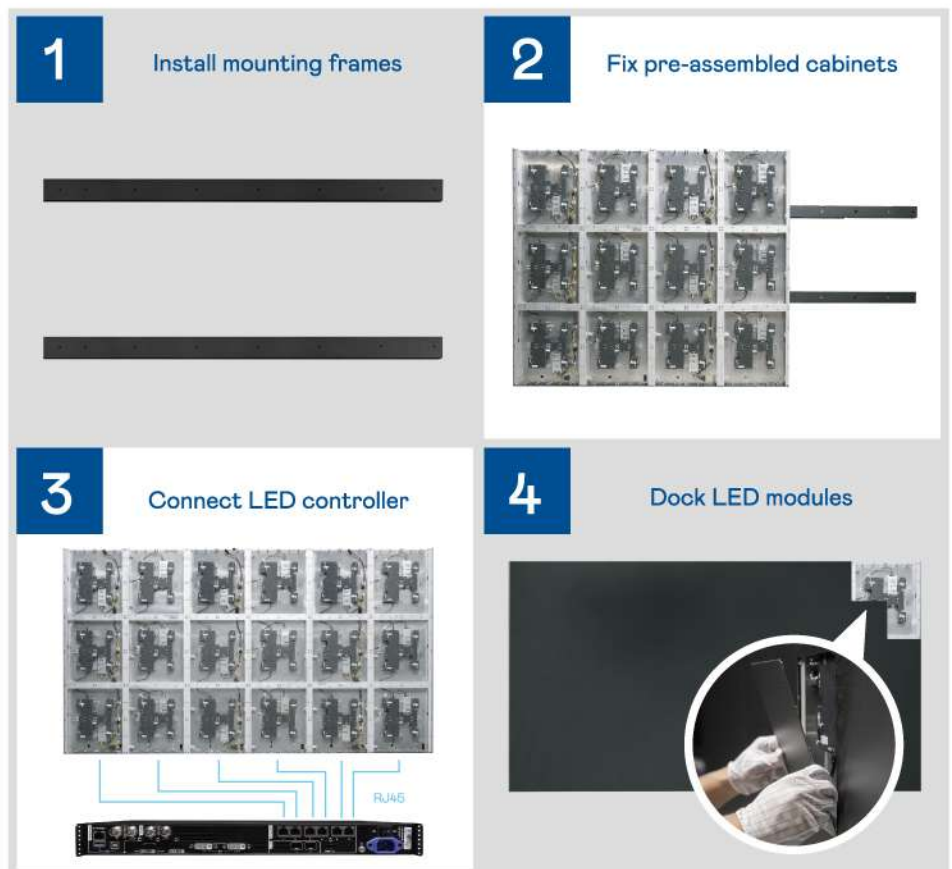


AUO Display Plus

Modular, Flexible Design

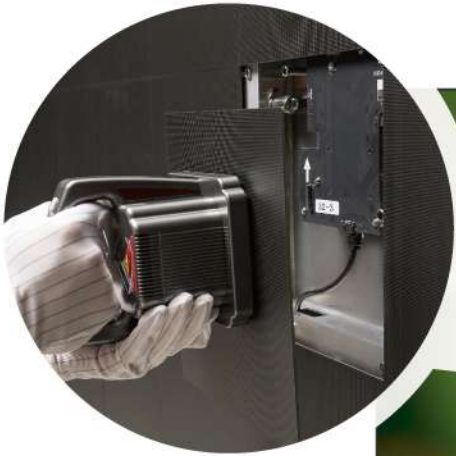
Easy 4-Step Installation

Packed into a flight case for easy transport, the pre-assembled cabinets, LED modules, mounting frames, LED controller, and network and power cables can be easily installed within 2 hours by 2 people. With the clever modular design, each LED module auto-calibrates its position values, saving you time on cumbersome connections.



Fast Front Maintenance

Replace a defective LED module without moving the entire display or accessing from difficult positions. The hot-swappable LED modules can be easily removed with the vacuum suction tool to enable front access for quick-turn maintenance.



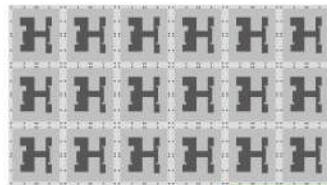
Configure Your Possibilities

Thanks to its flexible and modular design, the screen size can be expanded, enabling special size configurations to fit applications that require larger-scale and more immersive visual experiences like in control rooms, show rooms, and conference halls.

16:9



=

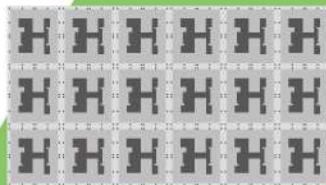


6 Cabinets

21:9



=



6 Cabinets

+

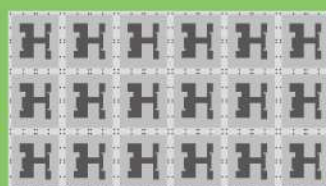


2 Cabinets

32:9

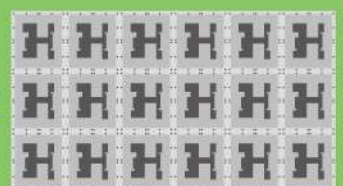


=



6 Cabinets

+



6 Cabinets

Bundled Video Control

User-defined Presets

The bundled LED controller comes with 10 user preset modes where shortcuts to specific brightness, color gamut, display area values are saved and accessed efficiently. 4 preset modes configured to Standard, Natural, Theater, and Meeting modes are included for different application scenarios.



Versatile Connectivity

Connect up to 4 video inputs via HDMI, DVI, 3G-SDI interfaces. Quickly switch between different inputs and enjoy versatile display modes such as full screen and picture-in-picture (PiP).

Applications



Meeting Room



Classroom



Conference Hall



Corporate Lobby



Showroom



Control Room

LED Display with Controller



Specifications

Product		LX-130	
Optical Specifications	Display Dimension	130"	
	LED & Package	P1.49 mm, SMD 1212	
	Resolution	1920 x 1080	
	Aspect Ratio	16:9	
	Brightness	500 nits	
	Color	Default 6500K	
	NTSC	110%	
	Contrast Ratio	7000:1	
	Refresh Rate	3840 Hz	
	Frame Rate	50 / 60 Hz	
Mechanical Specifications	Viewing Angle (H/V)	160°/ 140°	
	Color Depth	16bit (22bit with image processing)	
	Material	AL Extrusion	
	Display Weight	<130Kg, Wall Mount (Optional: Movable Stand)	
	Display Dimension	2880 x 1620 x 48 mm (w/o Bracket)	
Connectivity	Viewing Dimension	2880 x 1620 mm	
	LED Module	240 x 270 mm, P1.49 mm, SMD 1212	
Power Consumption & Safety	Installation	Wall Mount	
	Inputs	HDMI 1.3 x 2, DVI x 1, 3G-SDI x 1	
	Outputs	RJ-45 x 6, HDMI 1.3 x 1, OPT-Out x 2	
Operation	Peak	≤2.0 KW	
	Average	≤1.0 KW	
	Input Voltage	AC 220V±15%, 50/60Hz	
	Safety	Controller: CE,UL&CUL,FCC,CB Power Supply: BSMI , FCC/UL	
Operation	Storage	Temperature	-20°C ~ 50°C (-4°F ~ 122°F)
		Humidity	10% ~ 90% (non-condensing)
	Operating	Temperature	0°C ~ 40°C (32°F ~ 104°F)
		Humidity	20% ~ 80% (non-condensing)

Preliminary specifications, subject to change without prior notice.

✉ info@auodplus.com
🌐 auodplus.com

Taiwan (Headquarters)
AUO Display Plus Corp.
+886-3-5631288

Authorized Distributor
JECTOR Digital Corporation
+886-2-8227-3311
✉ sale@jectordigital.com
🌐 jectordigital.com

Dealer Stamp

AUO
AUO Display+