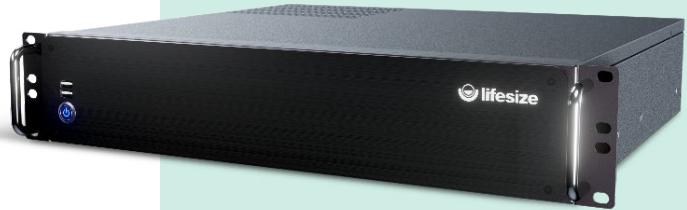




Lifesize® Icon 900™

Designed with flexibility for big audiences



Enhance engagement in large meeting spaces

As people return to offices, organizations are looking to keep employees, colleagues and others connected and engaged whether they are remote or in the room, including large meeting spaces like auditoriums, classrooms or multipurpose big rooms used for all-hands meetings. Lifesize Icon 900 is specifically built to bring video collaboration to large meeting spaces with complex audio/visual requirements.

Well-integrated audio, video and presentation are essential to deliver a rich communication experience, but when it comes to these unique spaces there is no such thing as one-size-fits-all. Lifesize Icon 900 is designed with flexibility and compatibility with the latest technologies – from a robust command line interface and numerous I/O options to compatibility with other calling services and best-in-class quality. The combination of Lifesize Icon 900 and the Lifesize service delivers an exceptional video communication experience that will resonate with end users and integrators alike.

Integration ready

Delivers leading AV connectivity options and capabilities for tailor-made meeting spaces

Easy fit with the broader AV ecosystem

Connect with audio and video components and room control systems like Crestron, Extron and others

Incredible flexibility

Numerous audio and video inputs and outputs for multiple cameras, displays, speakers, microphones and more

Versatile and secure

Enables secure installation into any industry-standard server, podium or other rack-mount space and ultra-quiet operation for flexible placement in noise-sensitive environments

Designed for the cloud

Integration with the Lifesize cloud-based service provides a comprehensive solution for audio, web and video conferencing

Ultimate video options

4K inputs, multiple outputs and future-proofed for network-attached AV devices

Bring in best-in-class audio solutions

Get exceptional audio quality with Lifesize® Phone™ HD or seamlessly integrate with third-party professional audio solutions

Proceed with confidence

Long-managed life cycle and high-performance system designed for the reliability and security businesses demand

DATASHEET

HARDWARE SPECIFICATIONS

SYSTEM COMPONENTS

- Lifesize Icon 900 system, 2U with rack mounts attached
- Cable kit

COMMUNICATION PORTS

- 1 x RJ-45 Network LAN 100/1000
- 4 x RJ-45 100/1000 PoE+

VIDEO INPUTS

- 2 x HDMI inputs up to 4K UHD (3840x2160p30)

VIDEO OUTPUTS

- 2 x HDMI outputs up to 4K UHD (3840x2160p30). Supported resolutions:
 - 3840 x 2160p, 30 fps
 - 1920 x 1080p, 30 fps
 - 1280 x 720p, 30 fps
- 1 x DisplayPort® output up to 1080p HD. Supported resolutions:
 - 1920 x 1080p, 30 fps
 - 1280 x 720p, 30 fps

VIDEO SPECIFICATIONS

- Auto-adjusts video resolution depending on available bandwidth and latency ¹²

VIDEO STANDARDS

- H.264 High Profile, H.264 Constrained Baseline Profile

POWER OVER ETHERNET PORTS

- PoE+ (IEEE 802.3af and IEEE 802.3at) ports for both data and power transmission (up to 30 watts at 52 VDC per port)
- 100/1000 operation at up to 91m (300 ft) using Cat 5e cable or better
- Supports Lifesize Phone HD
- Note: Use of the DC power input jacks on the Lifesize Icon 900 PoE+ I/O cards is not supported³

AUDIO FEATURES

- Lifesize Phone HD via local PoE+ connection
- 1 x 3.5 mm line input
- 1 x 3.5 mm line output
- 1 x 3.5 mm mic input

SECURITY

- HTTP and SSH disabled by default
- TLS/DTLS/SRTP support

NETWORKING FEATURES

- Proprietary automatic bandwidth and latency detection and adjustment
- Forward error correction for superior video quality
- Proprietary advanced network congestion control algorithms
- IPv4 support

SYSTEM MANAGEMENT

- 6 x USB 3.1 Gen2 (10 Gbps)
- 4 x USB 3.1 Gen1 (5 Gbps)
- 2 x USB 3.0 – Lifesize proprietary device control access on front panel USB ports
- USB supports Video In, Audio In, Audio Out, and VISCA over USB serial
- Support for third-party touch panel controls and mixing units
- Web interface for accessing advanced settings and diagnostics

POWER

- Typical system power supplied by AC-DC power supply. AC specification: 100–240 VAC, 50–60 Hz, 6–2.5 A
 - Idle 82 watts (280 BTU/hr)
 - In-call 117 watts (400 BTU/hr)

ENVIRONMENTAL DATA

- Operating temperature: 0°C (32°F) to 40°C (104°F)
- Operating humidity: 15% to 85%, noncondensing
- Storage temperature: –20°C (–4°F) to 60°C (140°F)
- Storage humidity: 10% to 90%, noncondensing

VIDEO DEVICE DIMENSIONS

- Width (with removable ears): 482.0 mm (19.0 in)
- Width (without ears): 427.7 mm (16.8 in)
- Depth: 401.1 mm (15.8 in)
- Height: 88.8 mm (3.5 in)
- Unpackaged weight 8.0 Kg (17.5lbs)

PACKAGED DIMENSIONS

- Width: 547.0 mm (21.5 in)
- Depth: 548.5 mm (21.6 in)
- Height: 219.5 mm (8.6 in)
- Shipping weight 11.5 Kg (25.5lbs)

REGULATORY NUMBER

- Lifesize Icon 900 = LFZ-041

CLOUD-ATTACHED FEATURES

A Lifesize Device Software Subscription is required to pair to Lifesize cloud-based service

CALLING

- Create a group call by seamlessly adding video and voice participants
- Presence-enabled, searchable user and meeting directory with up to 10,000 entries
- Unlimited guest calling
- Join third-party video conferencing services like Zoom, Cisco WebEx®, BlueJeans by Verizon, Microsoft Teams™ and more
- Supports direct media for point-to-point calling between Lifesize clients and Lifesize Icon room systems
- SIP, H.323 and other interoperability standards
- Automatic software updates
- NAT/firewall traversal

Note: The number of active video sources in a call is limited to two.

MANAGEMENT

- Browser-based admin console
- Centralized device management
- Real-time alerts and health monitoring
- Usage reports and notifications
- Live and past meeting statistics
- Calendar integration for one-tap join for Lifesize and Amazon Chime meetings scheduled via Microsoft® Office 365®, Google Workspace or Microsoft® Exchange Server 2013 or 2016 calendar
- Customization of Lifesize Phone HD and Lifesize Icon background image
- Alexa for Business integration for touch-free navigation and room management

Add a Lifesize subscription account

Entitle every user in your organization and get additional features like meeting recording and sharing, audio conferencing, live streaming and more. Feature availability and price vary by subscription plan, selected options and paired devices. [Learn more.](#)

¹ When paired to the Lifesize cloud-based service, some features and settings are managed by Lifesize to tailor the user experience for use with the service.

² 1080p30 for multiway calls

³ Plugging a power source into the PoE+ I/O card's DC power jacks may cause permanent damage to the hardware. The PoE+ I/O card power connection is hardwired internal to the Lifesize Icon 900 chassis at the time of manufacture. No further input power source is required.

